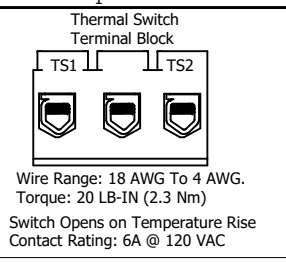
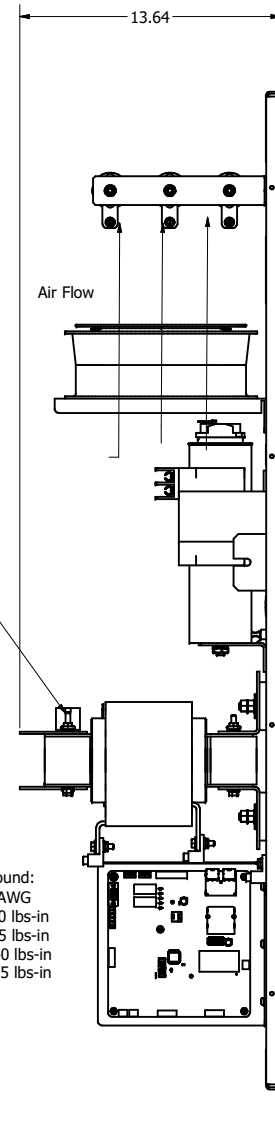
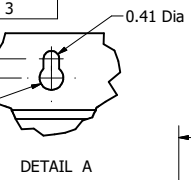
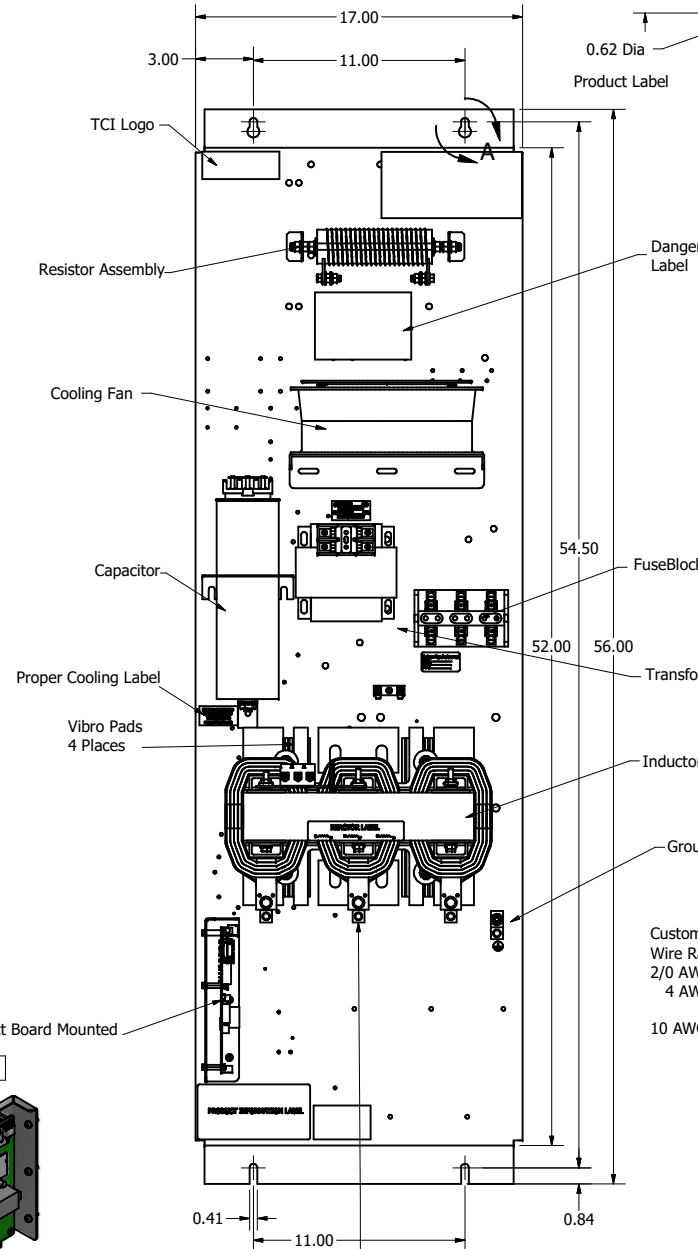
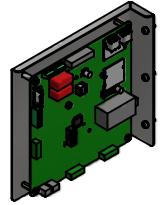
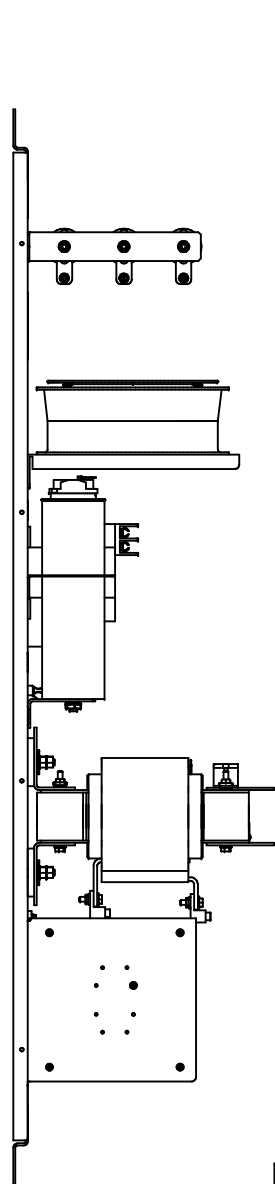


SineWave Part Number	Schematic Drawing#	Approx Weight (LBS)
KMG130C00A	24281-23A	250
KMG130C00P	24281-23P	255

HorsePower (HP)	kVar	Max Amps	Voltage (V)	HZ	Phase
125	15	130	600	60	3

D
C
B
A



Customer Connections And Ground:
Wire Range -2/0 AWG to #14 AWG
2/0 AWG to 3 AWG: Torque 50 lbs-in
4 AWG to 6 AWG: Torque 45 lbs-in
8 AWG: Torque 40 lbs-in
10 AWG to 14 AWG: Torque 35 lbs-in

Customer Is Responsible For Proper Cooling Of Components In Customers Assembly.
Customer Is Responsible For Installation to Meet All National And Local Electrical Codes.
Material(s) Shall be RoHS Compliant

Customer Connections
U V W
T1 T2 T3

TCI, LLC CLAIMS PROPRIETARY RIGHTS IN THE MATERIAL HEREIN DISCLOSED. IT IS SUPPLIED WITHOUT PREJUDICE TO ANY PATENT RIGHTS OF TCI AND MAY NOT BE REPRODUCED OR USED TO MANUFACTURE ANYTHING SHOWN THEREIN WITHOUT WRITTEN PERMISSION FROM TCI.

NO	REVISION	DATE	BY	SCALE
B	Add PQconnect Board	9/23/2020	DSW	± 1/16
NO				± 1°

TOLERANCES (EXCEPT AS NOTED)		W 132 N10611 Grant Drive Germantown, WI 53022	
DECIMAL	.XX ± .25 .XXX ± .10	 KMG130C00-, SineWave Filter Open Panel, 125HP, 600V	
FRACTIONAL	± 1/16		
ANGULAR	± 1°	DRN BY: DSW	DATE: 10/12/2016
		SCALE: 1/5	FILE: 104425DG
			REV: 1

D
C
B
A